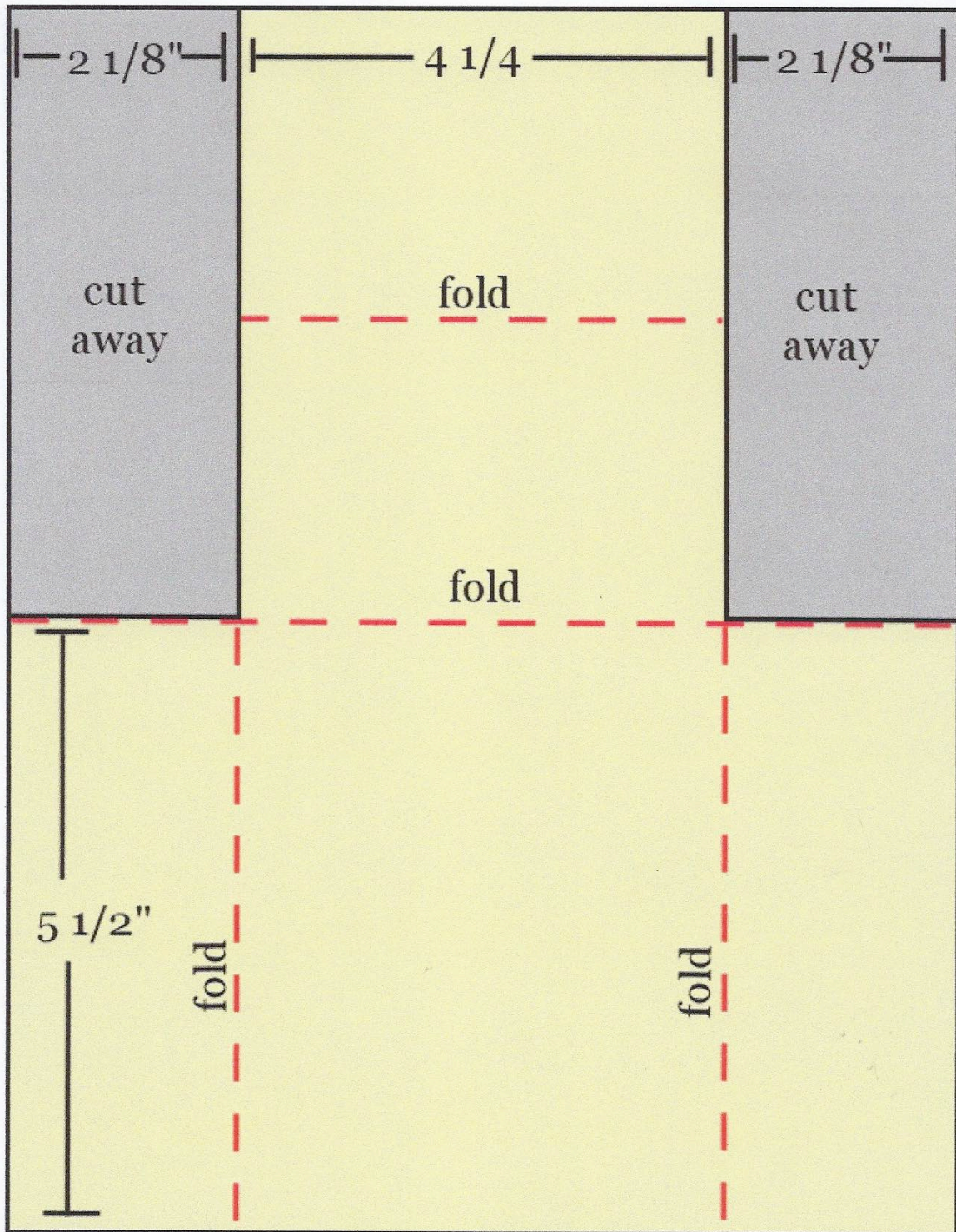


Gatefold Easel Card Template  
8 1/2"x11" cardstock



## **This is What You Will Need For The Gatefold Easel Christmas Card**

Please note that the above template came from the Frugal Crafters Blog

### **Paper**

1 whole sheet of Real Red Cardstock scored at 5 ½” across the long side. Refer to template.  
Turn and score at 2 1/8” then at 2 1/8” on the opposite side  
3 pieces of Basic White Cardstock cut to 4” x 2 ½”  
1 Piece of Basic White Cardstock cut to 4” x 5 ¼”  
1 piece of Crumb Cake Cardstock to cut the sentiment labels from  
1 Piece of Tidings of Christmas DSP cut 3 ¾” x 5”  
2 Pieces of Real Red Cardstock to cut 2 labels from to border the sentiments  
4 pieces of Basic White Cardstock cut to 1 7/8” x 5 1/4”  
2 pieces of Tidings of Christmas DSP ( designers series paper) cut to 1 5/8”x 5 for the outside  
2 pieces of Tidings of Tidings of Christmas DSP ( designers series paper) cut to 1 5/8”x 5 for the inside  
1 piece of Red Velvet Paper or a piece of Real Red Cardstock cut 1” x 11” for band  
Scraps of Crumb Cake Cardstock for the pine cone  
Scraps of the Evening Evergreen Cardstock for the holly  
Scraps of Real Red to cut Holly Berries from  
1 piece of Tidings of Christmas DSP paper measuring 2 3/8” x 6” if you want to decorate back flap of envelope

### **Red Velvet Paper Pack 12” x 12”**

### **DSP Designers Series Paper**

Tidings of Christmas DSP

### **Stamps & Dies**

Christmas Season Bundle

For Unto Us Stamp Set

### **Ink**

Versa Mark

Early Espresso

### **Embossing Powder**

Gold



## Adhesive

Multipurpose Glue

Stampin' Seal

## Tools

Embossing Buddy

Heat Tool

Take Your Pick Tool

Paper Trimmer

Scissors

Stamparatus or Acrylic Block E

Bone Folder

Simple Shammy

Stampin' Cut & Emboss Machine

( Mini Stampin' Cut & Emboss Machine will work for this project)

**Stampin' UP does not sell these but they are very helpful in card making**

**Reverse tweezers with pointed tip**

**Xyron adhesive eraser**

**Tombow Mono sand and rubber eraser combo**

## Instructions

1. Score the 8 ½" x 11" piece of Real Red Cardstock and cut away the two pieces as shown on the template.
2. Cut all pieces of cardstock except sentiment pieces, pinecone, and holly
3. Emboss the sentiment pieces using gold embossing powder then with labels from the Christmas Bundle, choose the die and place on your sentiment and run through die cutting machine ( If you don't know how to emboss watch my video (Beauty of Tomorrow Embossed Specialty Card)
4. Cut two real red pieces the same as the sentiment labels. Cut each label in half and adhere to the proper sentiment label.
5. Stamp the Pine Cone image onto the Crumb Cake cardstock
6. Using the matching die run through the die cutting machine
7. Cut the pine cone and holly using the proper dies
7. Using two pieces of Tidings of Christmas DSP ( designers series paper) cut to 1 5/8"x 5 for the outside glue to the two pieces of Basic White Cardstock cut to 1 7/8" x 5 1/4", then glue to the front of one side of the gate and then the other.
8. Using the last two pieces of Tidings of Christmas DSP ( designers series paper) cut to 1 5/8"x 5 for the inside glue to the two pieces of Basic White Cardstock cut to 1 7/8" x 5 1/4"and glue these to the inside of the card gate.
9. Glue the piece of Piece of Tidings of Christmas DSP cut 3 ¾" x 5" to the piece of Basic White Cardstock cut to 4" x 5 ¼".
10. Putting **glue on the bottom half of the back** of this piece glue to the center support of the card. Glue only the bottom half. My video will show clearly how to do this if you have any questions.
11. Now glue together the 3 pieces of Basic White Cardstock cut to 4" x 2 ½" one on top of the other. Next glue the unit to the center of the card nearest you so that the center of the card will strike the white rectangles causing the center of the card to stand up.
12. Glue the sentiments in their proper places.

## **Band for Card**

Take the 1" x 11" piece of red velvet cardstock and wrap around the card. Using some double sided tape lay the left end over the right and secure.

Now decorate with the pine cone, holly and berries to hide the end of your band.

## **Envelope**

Using your tape runner put tape on the top side of the flap of the envelope. Carefully lay your piece of DSP (Designer Series Paper) measuring 2 3/8" x 6" on the flap starting at the fold of the flap. Trim and you are done!

